

**GPRC5B Antibody (C-term)**  
**Affinity Purified Rabbit Polyclonal Antibody (Pab)**  
**Catalog # AP16444b****Specification**

---

**GPRC5B Antibody (C-term) - Product Information**

Application	WB,E
Primary Accession	<a href="#">O9NZH0</a>
Other Accession	<a href="#">NP_057319.1</a>
Reactivity	Human
Host	Rabbit
Clonality	Polyclonal
Isotype	Rabbit IgG
Calculated MW	44795
Antigen Region	293-321

**GPRC5B Antibody (C-term) - Additional Information****Gene ID** 51704**Other Names**

G-protein coupled receptor family C group 5 member B, A-69G121, Retinoic acid-induced gene 2 protein, RAIG-2, GPRC5B, RAIG2

**Target/Specificity**

This GPRC5B antibody is generated from rabbits immunized with a KLH conjugated synthetic peptide between 293-321 amino acids from the C-terminal region of human GPRC5B.

**Dilution**

WB~~1:1000

E~~Use at an assay dependent concentration.

**Format**

Purified polyclonal antibody supplied in PBS with 0.09% (W/V) sodium azide. This antibody is purified through a protein A column, followed by peptide affinity purification.

**Storage**

Maintain refrigerated at 2-8°C for up to 2 weeks. For long term storage store at -20°C in small aliquots to prevent freeze-thaw cycles.

**Precautions**

GPRC5B Antibody (C-term) is for research use only and not for use in diagnostic or therapeutic procedures.

**GPRC5B Antibody (C-term) - Protein Information****Name** GPRC5B

**Synonyms** RAIG2

**Function** G-protein coupled receptor involved in the regulation of cell volume.

**Cellular Location**

Cell membrane; Multi-pass membrane protein. Cytoplasmic vesicle membrane; Multi-pass membrane protein. Note=Localized in the plasma membrane and perinuclear vesicles

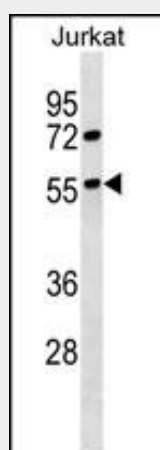
**Tissue Location**

Expression is high in kidney, pancreas, and testis, medium in brain, heart, prostate, small intestine, and spleen, low in liver, placenta, skeletal muscle, colon, ovary, and thymus, and not detectable in lung and peripheral leukocyte. According to PubMed:10945465, highly expressed in most brain areas examined, with the highest levels observed in corpus callosum, caudate nucleus, putamen, substantia nigra, thalamus, hippocampus, and spinal cord as well as in dorsal root ganglia (DRG). Expressed in glia limitans, ependymal cells, astrocyte cell bodies, the perivascular region in astrocyte endfeet, but not in neurons (PubMed:37143309). In the periphery, expression levels are relatively low, compared to the CNS, with the strongest expression detected in pancreas, testis, uterus, and stomach.

**GPRC5B Antibody (C-term) - Protocols**

Provided below are standard protocols that you may find useful for product applications.

- [Western Blot](#)
- [Blocking Peptides](#)
- [Dot Blot](#)
- [Immunohistochemistry](#)
- [Immunofluorescence](#)
- [Immunoprecipitation](#)
- [Flow Cytometry](#)
- [Cell Culture](#)

**GPRC5B Antibody (C-term) - Images**

GPRC5B Antibody (C-term) (Cat. #AP16444b) western blot analysis in Jurkat cell line lysates (35ug/lane). This demonstrates the GPRC5B antibody detected the GPRC5B protein (arrow).

**GPRC5B Antibody (C-term) - Background**

GPRC5B is a member of the type 3

G protein-coupled receptor family. Members of this superfamily are characterized by a signature 7-transmembrane domain motif. The specific function of this protein is unknown; however, this protein may mediate the cellular effects of retinoic acid on the G protein signal transduction cascade.

#### **GPRC5B Antibody (C-term) - References**

Yokoyama, K., et al. Nephron Clin Pract 115 (4), C237-C243 (2010) :  
Robbins, M.J., et al. Genomics 67(1):8-18(2000)  
Brauner-Osborne, H., et al. Genomics 65(2):121-128(2000)  
Loftus, B.J., et al. Genomics 60(3):295-308(1999)